

PROPRIETARY AND CONFIDENTIAL

THE INFORMATION CONTAINED IN THIS DRAWING IS THE SOLE PROPERTY OF **OneGrill, LLC**. ANY REPRODUCTION IN PART OR AS A WHOLE WITHOUT THE WRITTEN PERMISSION OF **OneGrill, LLC** IS PROHIBITED.

		UNLESS OTHERWISE SPECIFIED:		NAME	DATE
		DIMENSIONS ARE IN INCHES	DRAWN	Joe S.	
		TOLERANCES:	CHECKED		
		FRACTIONAL $\pm .030$	ENG APPR.		
		ANGULAR: MACH ± 1 BEND ± 1	MFG APPR.		
		TWO PLACE DECIMAL $\pm .030$	Q.A.		
		THREE PLACE DECIMAL $\pm .005$			
		INTERPRET GEOMETRIC TOLERANCING PER:			
		MATERIAL			
		304 Stainless			
		FINISH			
		Brush			
NEXT ASSY	USED ON				
APPLICATION		DO NOT SCALE DRAWING			



OneGrill, LLC

Maineville, Ohio
45039

TITLE:

OneGrill Bracket
Fits Weber Grills
All 200 and 300 Series
Not 2Burner 210

SIZE
A

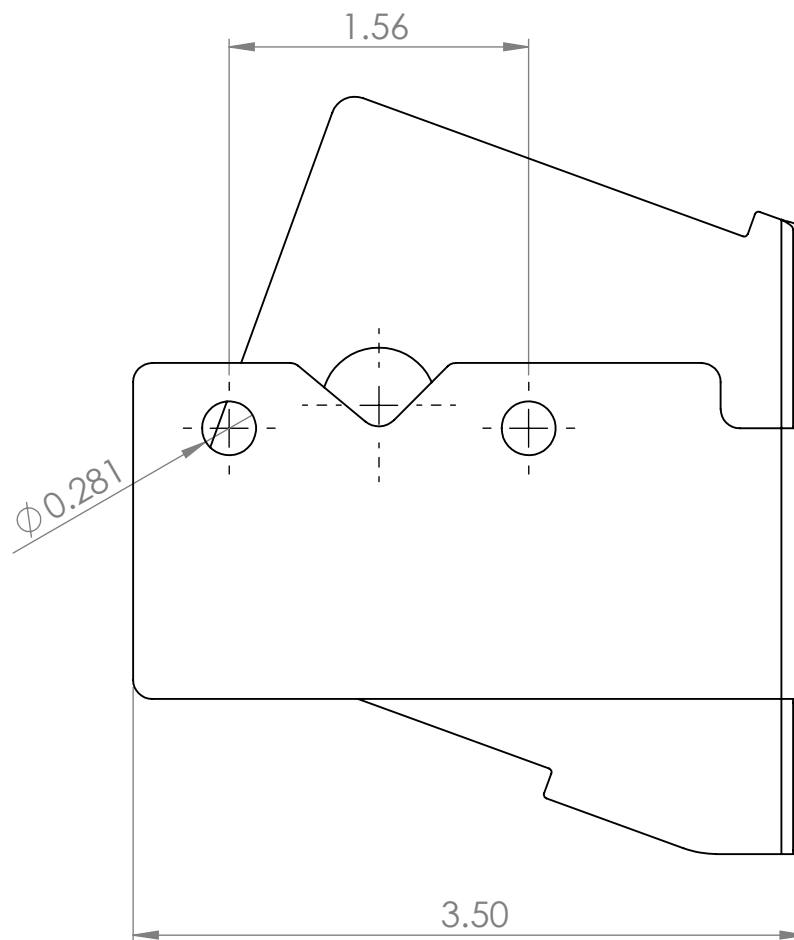
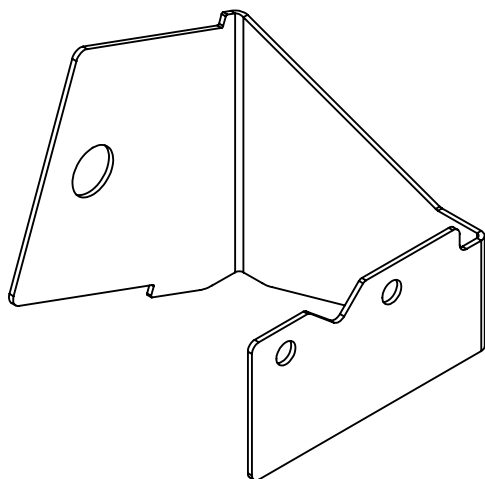
DWG. NO.
4PB30

REV
A

SCALE: 1:1

WEIGHT:

SHEET 1 OF 3



PROPRIETARY AND CONFIDENTIAL

THE INFORMATION CONTAINED IN THIS DRAWING IS THE SOLE PROPERTY OF **OneGrill, LLC**. ANY REPRODUCTION IN PART OR AS A WHOLE WITHOUT THE WRITTEN PERMISSION OF **OneGrill, LLC** IS PROHIBITED.

		UNLESS OTHERWISE SPECIFIED:		NAME	DATE	<div>OneGrill, LLC</div> <div>Maineville, Ohio 45039</div> <div>TITLE:<div>Weber Bracket</div>All 200 - 300 Series Grills</div>		
		DIMENSIONS ARE IN INCHES	DRAWN	Joe S.				
		TOLERANCES:	CHECKED					
		FRACTIONAL ± .030	ENG APPR.					
		ANGULAR: MACH ± 1 BEND ± 1	MFG APPR.					
		TWO PLACE DECIMAL ± .030				<div>SIZE</div> <div>A</div> <div>DWG. NO.</div> <div>4PB30</div> <div>REV</div> <div>A</div> <div>SCALE: 1:2</div> <div>WEIGHT:</div> <div>SHEET 2 OF 3</div>		
		THREE PLACE DECIMAL ± .005						
		INTERPRET GEOMETRIC TOLERANCING PER:	Q.A.					
		MATERIAL	<div>OneGrill</div> <div>BBO Products</div>					
		304 Stanless						
NEXT ASSY	USED ON	FINISH	Brush 4B					
APPLICATION		DO NOT SCALE DRAWING						